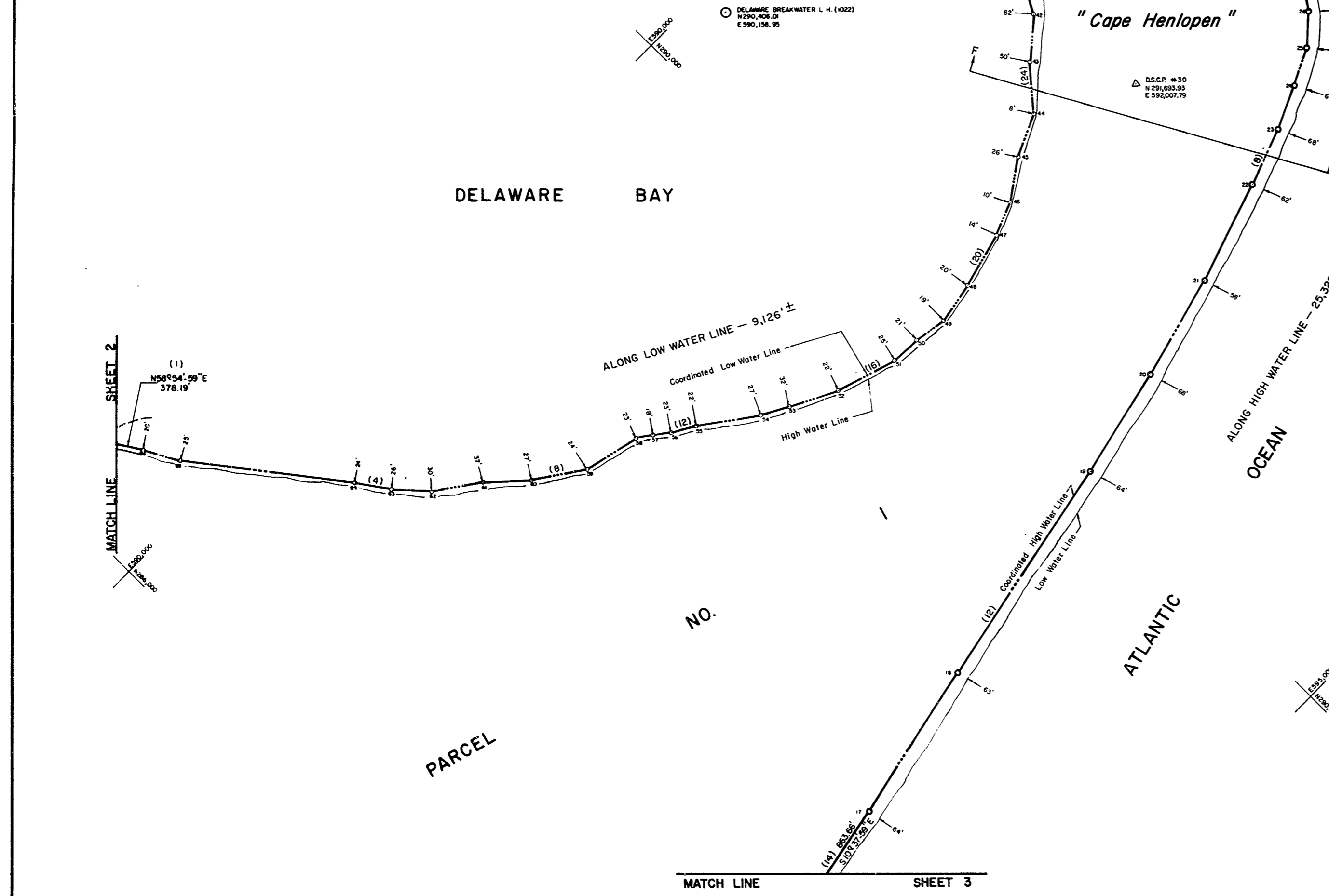
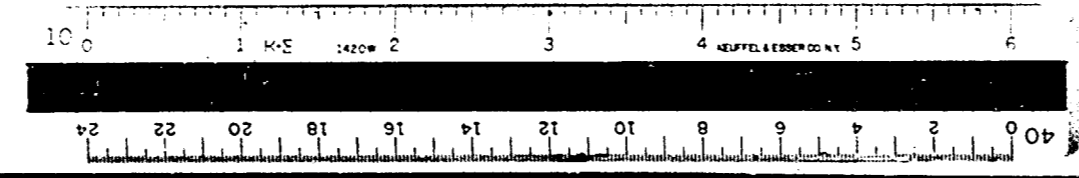


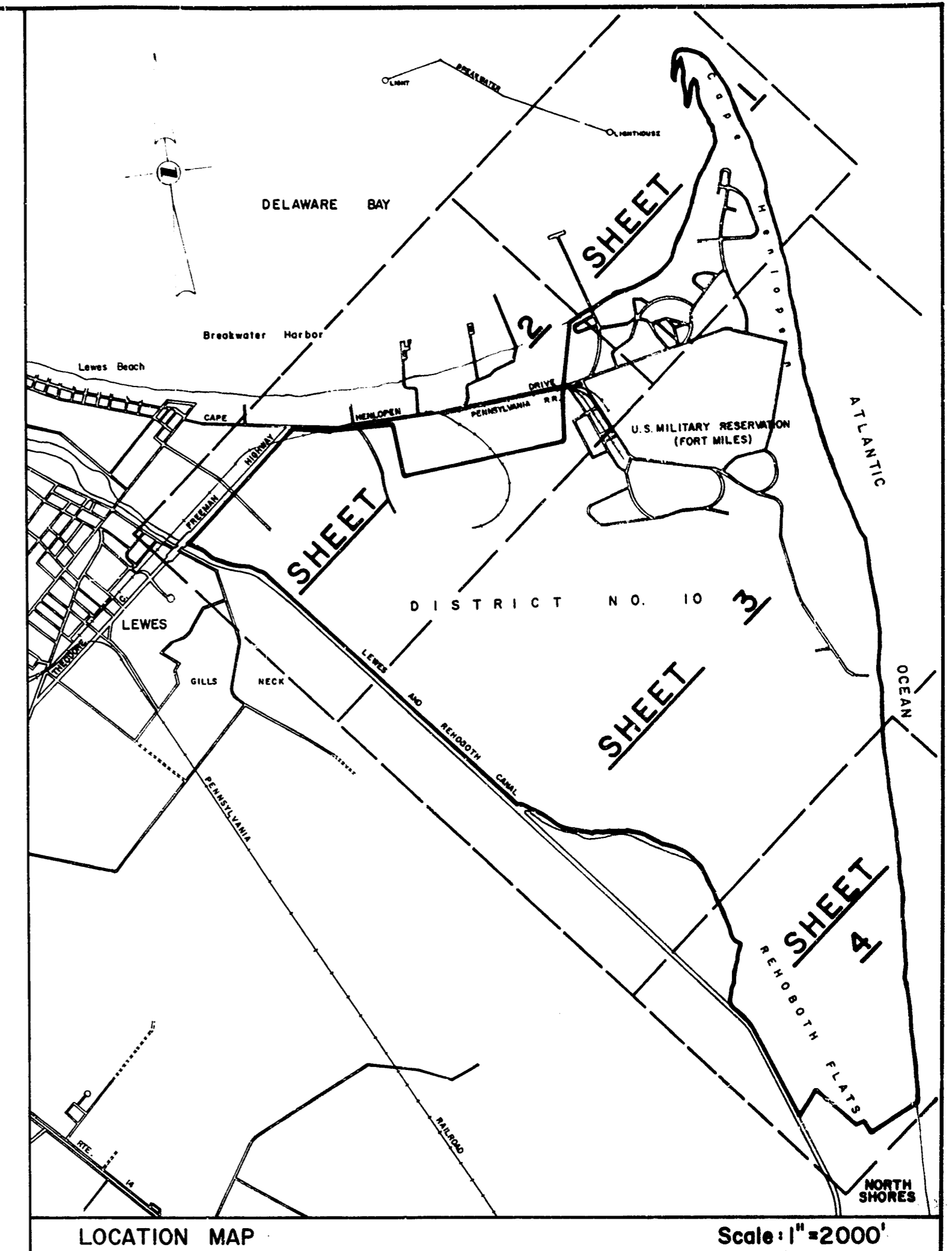
| COORDINATED SURVEY INFORMATION | | | | SURVEY INFORMATION | | | | | |
|--------------------------------|------------|------------|-------------------|--------------------|-------|------------|------------|-------------------|----------|
| POINT | NORTHING | EASTING | BEARING | DISTANCE | POINT | NORTHING | EASTING | BEARING | DISTANCE |
| 17 | 287,882.29 | 593,742.80 | S12°13'-55"E (1) | 886.91' | 41 | 291,730.24 | 591,039.29 | N64°31'-55"W (12) | 344.22' |
| 18 | 286,749.07 | 593,544.89 | S14°12'-56"E (10) | 1301.25' | 42 | 291,566.16 | 591,341.89 | N40°24'-59"W (23) | 258.01' |
| 19 | 290,025.47 | 593,301.80 | S12°30'-53"E (11) | 619.97' | 43 | 291,369.73 | 591,509.16 | N49°23'-18"W (24) | 281.58' |
| 20 | 290,630.51 | 593,166.58 | S15°09'-28"E (10) | 583.30' | 44 | 291,186.44 | 591,722.92 | N29°49'-34"W (23) | 246.80' |
| 21 | 291,193.52 | 593,014.06 | S18°18'-51"E (9) | 581.40' | 45 | 290,980.67 | 591,822.62 | N39°15'-55"W (22) | 249.53' |
| 22 | 291,740.47 | 593,381.37 | S20°06'-20"E (8) | 327.27' | 46 | 290,756.93 | 591,966.89 | N12°34'-27"W (21) | 191.81' |
| 23 | 292,052.80 | 592,718.87 | S24°19'-02"E (7) | 256.32' | 47 | 290,579.82 | 592,040.32 | N14°33'-34"W (20) | 318.77' |
| 24 | 292,286.38 | 592,613.32 | S27°26'-02"E (6) | 211.19' | 48 | 290,271.63 | 592,120.54 | N10°05'-17"W (19) | 230.58' |
| 25 | 292,473.82 | 592,516.02 | S41°36'-09"E (5) | 195.09' | 49 | 290,044.61 | 592,160.93 | N08°06'-44"E (18) | 172.02' |
| 26 | 292,619.70 | 592,386.49 | S54°47'-50"E (4) | 230.30' | 50 | 289,874.39 | 592,136.16 | N03°17'-40"E (17) | 164.86' |
| 27 | 292,752.46 | 592,198.30 | S64°18'-20"E (3) | 236.92' | 51 | 289,709.80 | 592,126.71 | N16°54'-54"E (16) | 346.48' |
| 28 | 292,855.18 | 591,984.81 | S74°16'-04"E (2) | 488.34' | 52 | 289,378.31 | 592,025.90 | N28°43'-36"E (15) | 282.32' |
| 29 | 292,987.59 | 591,514.76 | S80°03'-37"E (1) | 223.50' | 53 | 289,130.73 | 591,890.21 | N24°30'-51"E (14) | 151.41' |
| 30 | 293,025.72 | 591,294.54 | S04°11'-39"W | 91.00' | 54 | 289,992.79 | 591,827.79 | N35°39'-30"E (13) | 357.47' |
| 31 | 293,116.48 | 591,301.20 | S86°08'-36"E (2) | 199.67' | 55 | 289,702.34 | 591,619.40 | N07°50'-28"E (12) | 140.25' |
| 32 | 293,129.91 | 591,101.98 | N64°59'-47"E (3) | 224.52' | 56 | 289,581.92 | 591,547.50 | N37°09'-40"E (11) | 97.07' |
| 33 | 293,035.01 | 590,898.50 | N45°53'-46"E (4) | 181.76' | 57 | 289,504.56 | 591,488.87 | N32°55'-35"E (10) | 96.35' |
| 34 | 292,908.54 | 590,767.98 | N29°24'-50"E (5) | 140.46' | 58 | 289,423.68 | 591,436.50 | N25°57'-54"E (9) | 307.32' |
| 35 | 292,786.16 | 590,699.00 | N10°02'-22"E (6) | 135.78' | 59 | 289,124.20 | 591,367.55 | N34°30'-00"E (8) | 308.17' |
| 36 | 292,652.46 | 590,675.33 | N09°04'-59"W (7) | 123.01' | 60 | 287,870.23 | 591,193.00 | N42°06'-03"E (7) | 262.26' |
| 37 | 292,330.99 | 590,694.75 | N22°45'-09"W (8) | 248.66' | 61 | 287,678.22 | 590,014.36 | N48°27'-24"E (6) | 215.56' |
| 38 | 292,301.68 | 590,790.92 | N23°22'-47"W (9) | 346.73' | 62 | 287,443.12 | 590,852.23 | N55°54'-59"E (5) | 201.65' |
| 39 | 291,963.42 | 590,928.51 | N77°18'-49"W (8) | 268.62' | 63 | 287,299.89 | 590,691.14 | N52°29'-26"E (4) | 945.04' |
| 40 | 291,897.20 | 591,182.92 | N40°42'-15"E (7) | 220.24' | 64 | 287,186.74 | 590,524.23 | N52°29'-26"E (3) | 945.04' |
| | | | | | 65 | 286,611.31 | 589,774.57 | N62°16'-30"E (2) | 203.99' |
| | | | | | 66 | 286,516.59 | 589,594.36 | | |



NOTE:
THE PERIMETER OF THE PARCEL OF LAND SHOWN HEREIN IS IN ACCORDANCE WITH THE DIRECTIONS DICTATED BY THE 150th GENERAL ASSEMBLY OF THE STATE OF DELAWARE IN SENATE BILL NO. 315, SENATE AMENDMENT NO. 1, SECTION NO. 2, DATED JULY 5, 1979.



NOTE:
For Section "F-F" See Sheet 4 of 5



DATUM
Area within lines as described in Senate Bill 315 (Parcel No. 1) 3219.3 ± Acres
LINES AS DESCRIBED IN SENATE BILL 315 shown thus
COORDINATED SURVEY LINE shown thus
LEGEND OF SYMBOLS: Concrete Monument (C.M. - ■) Survey Station (○) Aluminum Monument (⊙)
Witness Post (○)
SYSTEM OF BEARINGS: Delaware Plane Coordinate System
DESIGNATED COURSE NUMBERS shown thus (36)

STATE OF DELAWARE
WARNER GRANT TRUST LANDS
SUSSEX COUNTY
LEWES & REHOBOTH HUNDRED

March 31, 1980 SCALE: 1" = 400'
Graphic Scale

Prepared by
MANN - TALLEY, INC.
818 WEST ST. WILMINGTON
288 N. REHOBOTH BLVD. MILFORD
DELAWARE

RECEIVED FOR RECORD
Sept 16 1980 12:22 PM
D.M.T. 9/16/80

APPROVED *Donald F. Talley* 7/21/80
Professional Engineer

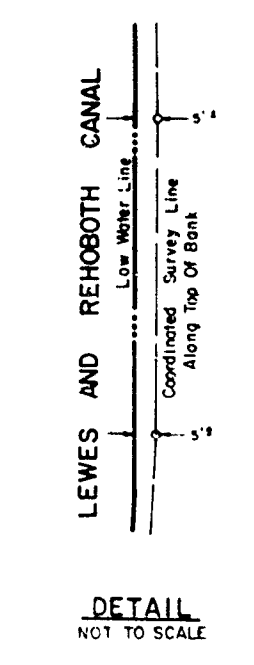
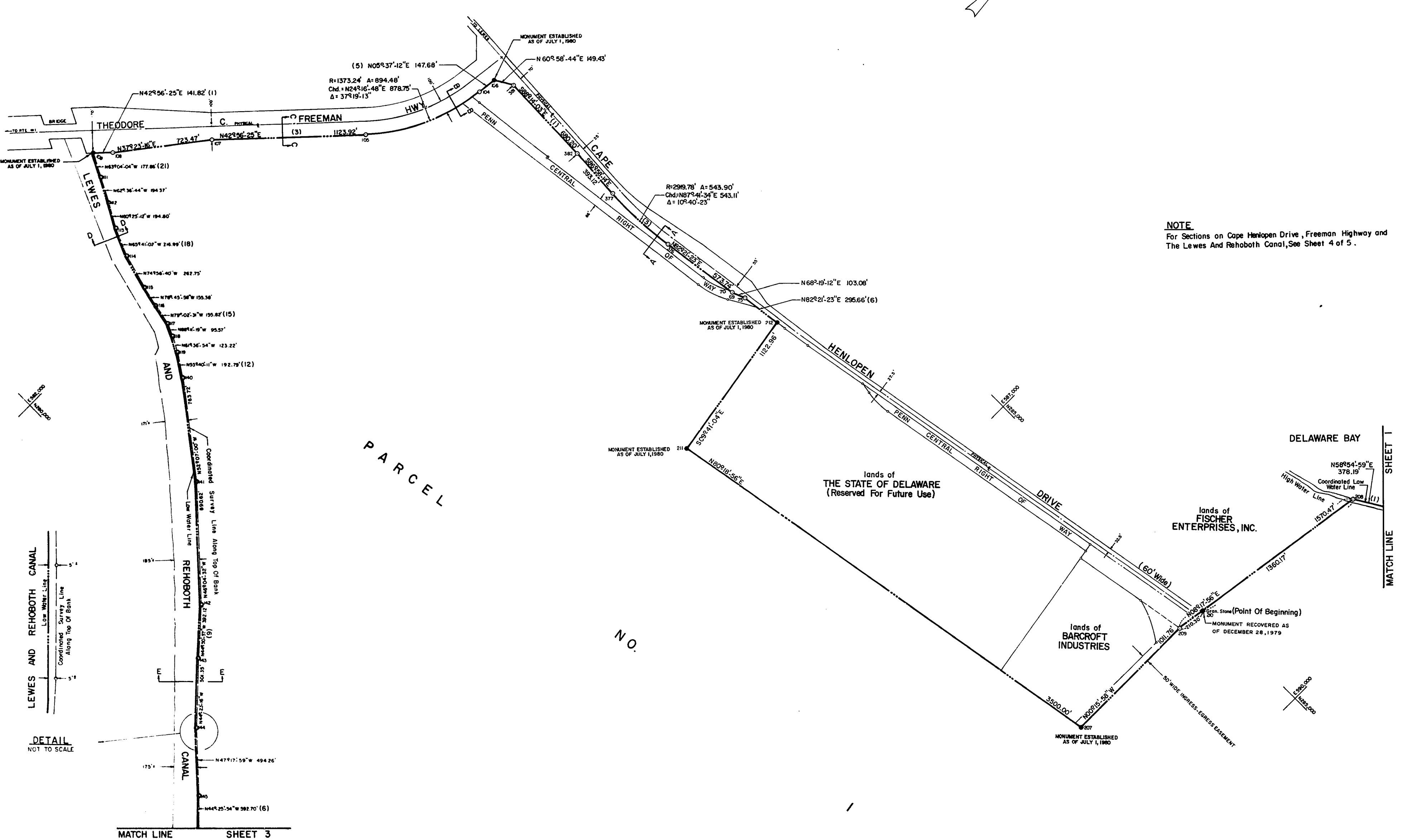
PB 26 P. 319

DWG. NO. 6590-L SHEET 1 of 5

COORDINATE
INFORMATION

| POINT | NORTHING | EASTING |
|-------|------------|------------|
| 208 | 286,321.34 | 589,270.47 |
| 210 | 284,975.41 | 585,019.14 |
| 209 | 284,767.31 | 589,043.79 |
| 207 | 283,755.56 | 589,048.49 |
| 211 | 283,166.78 | 585,038.37 |
| 212 | 284,273.74 | 585,409.46 |
| 75 | 284,234.41 | 585,116.43 |
| 69 | 284,196.53 | 585,020.65 |
| 70 | 284,793.03 | 584,994.00 |
| 376 | 284,120.02 | 584,452.01 |
| 377 | 284,098.15 | 583,909.34 |
| 382 | 284,118.93 | 583,516.77 |
| 381 | 284,139.89 | 582,836.89 |
| 106 | 284,087.40 | 582,708.23 |
| 104 | 283,820.43 | 583,691.78 |
| 105 | 283,119.41 | 582,330.43 |
| 107 | 282,296.63 | 581,264.77 |
| 108 | 281,721.80 | 581,123.48 |
| 109 | 281,617.98 | 581,028.86 |
| 111 | 281,537.42 | 581,197.43 |
| 112 | 281,448.01 | 581,360.01 |
| 113 | 281,351.85 | 581,529.42 |
| 114 | 281,262.50 | 581,727.18 |
| 115 | 281,194.25 | 581,980.89 |
| 116 | 281,158.88 | 582,132.14 |
| 117 | 281,129.06 | 582,280.12 |
| 118 | 281,093.55 | 582,373.84 |
| 119 | 281,054.97 | 582,482.23 |
| 140 | 280,926.24 | 582,641.46 |
| 141 | 280,807.28 | 582,744.23 |
| 142 | 279,632.65 | 583,083.70 |
| 143 | 279,561.43 | 584,162.21 |
| 144 | 279,203.15 | 584,512.92 |
| 145 | 278,887.96 | 584,876.15 |

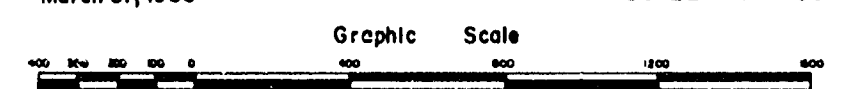
NOTE
For Sections on Cape Henlopen Drive, Freeman Highway and
The Lewes And Rehoboth Canal, See Sheet 4 of 5.



STATE OF DELAWARE
WARNER GRANT TRUST LANDS
SUSSEX COUNTY

LEWES & REHOBOTH HUNDRED

March 31, 1980 SCALE: 1" = 400'

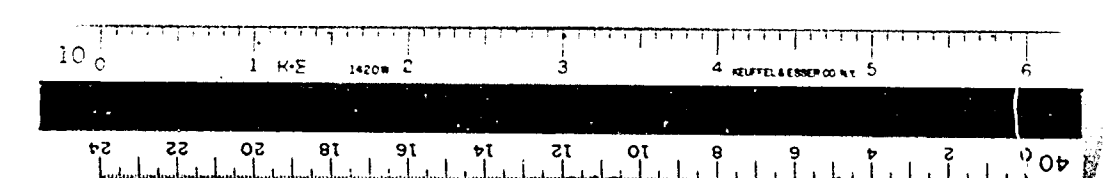


Prepared by
MANN - TALLEY, INC.
818 WEST ST. 288 N. REHOBOTH BLVD.
WILMINGTON, DE. MILFORD

DELAWARE
DWG. NO. 6590-L SHEET 2 of 5

RECEIVED FOR RECORD
Sept 14 1980
D. J. P. A. W.
D. J. P. A. W.

THIS PLATTED AREA
IS NOT WITHIN THE
SUBJECT OF THE
PLANNING
AND ZONING ORDINANCE
D. J. P. A. W.
9/16/82



D. J. P. 320

MATCH LINE SHEET 2

MATCH LINE SHEET 1

PARCEL NO. I

COORDINATE INFORMATION

| POINT | NORTHING | EASTING |
|-------|------------|------------|
| 1 | 277,861.09 | 595,411.80 |
| 2 | 278,321.84 | 595,407.83 |
| 3 | 278,954.38 | 595,428.58 |
| 4 | 279,268.37 | 595,405.47 |
| 5 | 279,566.81 | 595,369.49 |
| 6 | 280,292.92 | 595,388.76 |
| 7 | 280,976.38 | 595,225.75 |
| 8 | 281,558.64 | 595,150.21 |
| 9 | 282,028.08 | 595,010.15 |
| 10 | 282,484.83 | 594,761.12 |
| 11 | 283,038.15 | 594,504.41 |
| 12 | 284,270.75 | 594,324.71 |
| 13 | 285,864.93 | 594,224.78 |
| 14 | 287,458.69 | 594,113.94 |
| 15 | 288,321.66 | 594,000.80 |
| 16 | 287,033.46 | 593,902.18 |
| 166 | 278,444.72 | 585,291.07 |
| 147 | 277,542.25 | 585,788.57 |
| 148 | 272,225.61 | 586,490.17 |
| 149 | 274,793.08 | 586,963.43 |
| 233 | 276,433.95 | 587,283.38 |
| 129 | 275,818.85 | 587,882.44 |
| 280 | 275,187.89 | 592,051.37 |
| 281 | 274,677.80 | 591,493.27 |

STATE OF DELAWARE
 WARNER GRANT TRUST LANDS
 SUSSEX COUNTY

LEWES & REHOBOTH HUNDRED

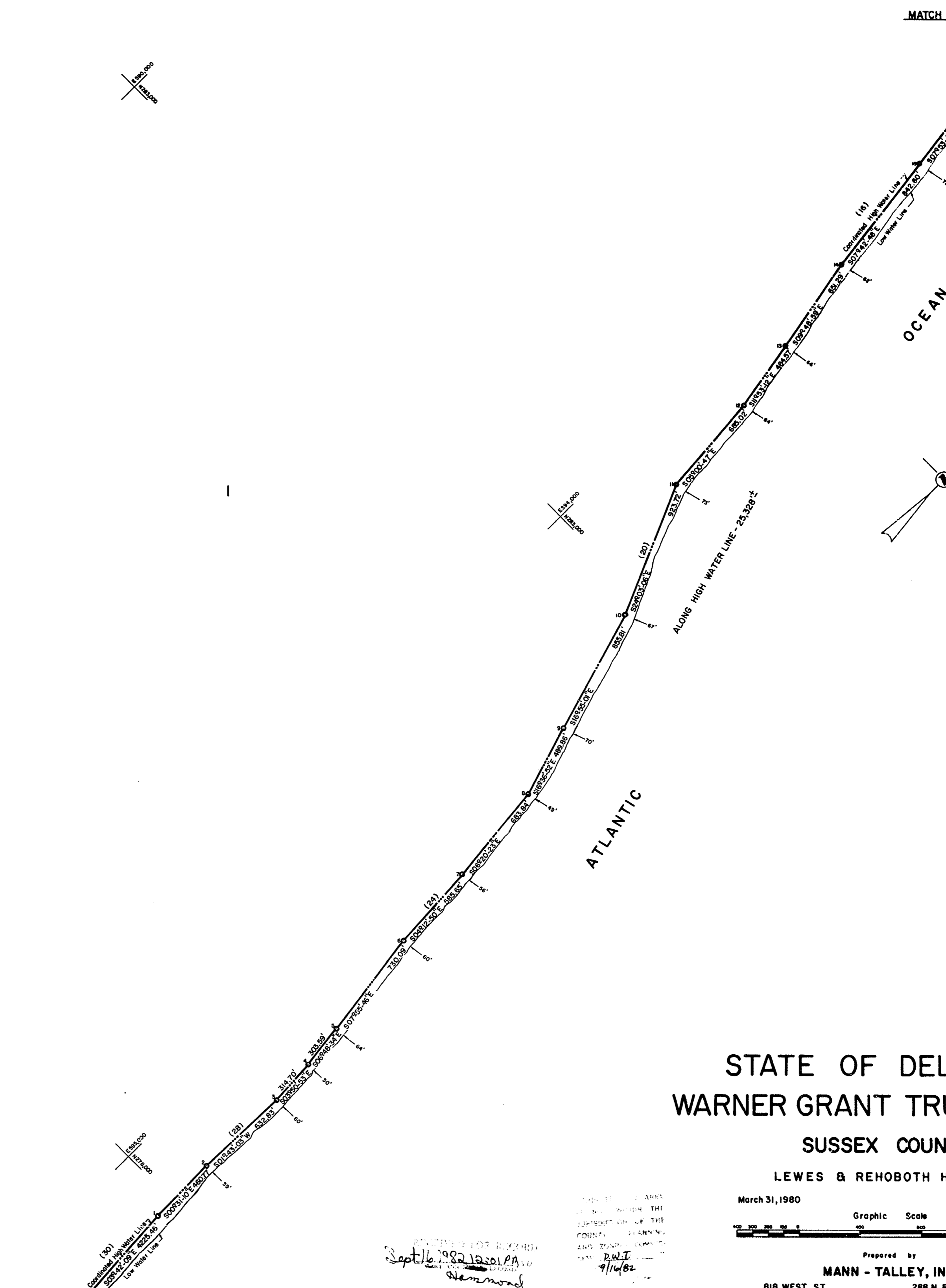
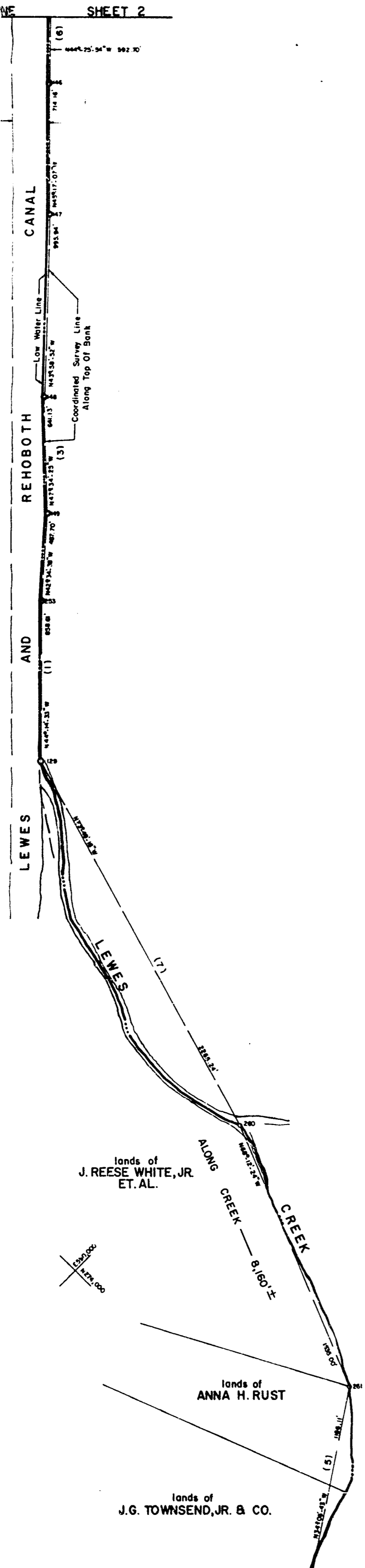
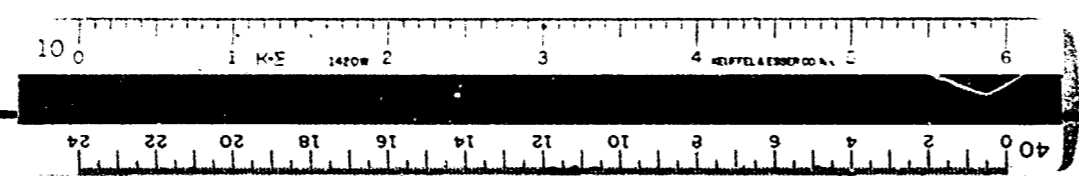
March 31, 1980 SCALE: 1"=400'



Prepared by
MANN - TALLEY, INC.
 818 WEST ST. 288 N. REHOBOTH BLVD.
 WILMINGTON MILFORD
 DELAWARE

DWG. NO. 6590-L SHEET 3 of 5

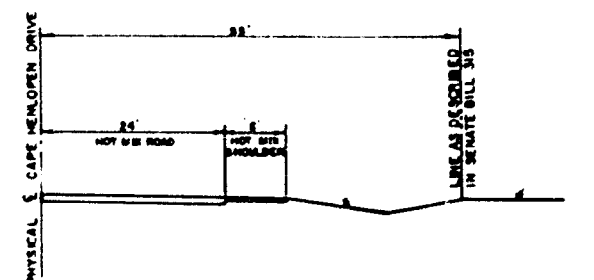
Sept 16, 1982
 DWT
 7/14/82



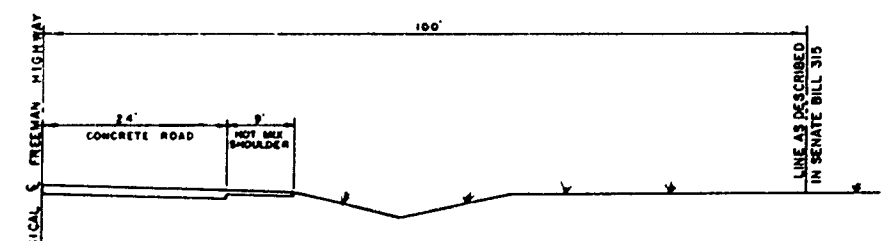
P. 351

COORDINATE INFORMATION

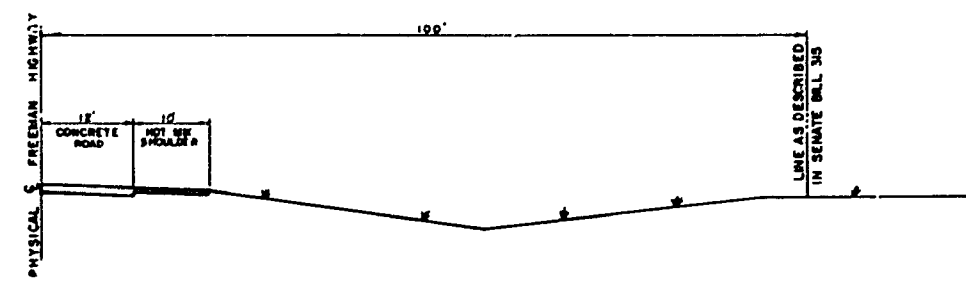
| POINT | NORTHING | EASTING |
|-------|------------|------------|
| 262 | 275,635.77 | 592,548.45 |
| 263 | 272,712.83 | 592,452.35 |
| 264 | 272,327.65 | 592,726.73 |
| 265 | 271,709.62 | 592,756.22 |
| 266 | 271,119.22 | 592,586.22 |
| 267 | 271,087.87 | 592,818.24 |
| 268 | 269,014.01 | 593,700.80 |
| 269 | 269,455.56 | 594,031.82 |
| 270 | 268,675.52 | 594,902.63 |
| 271 | 268,790.91 | 595,052.14 |
| 272 | 268,517.50 | 595,175.68 |
| 273 | 269,026.96 | 595,175.59 |
| 274 | 273,025.88 | 595,707.91 |
| 275 | 273,644.45 | 595,694.66 |



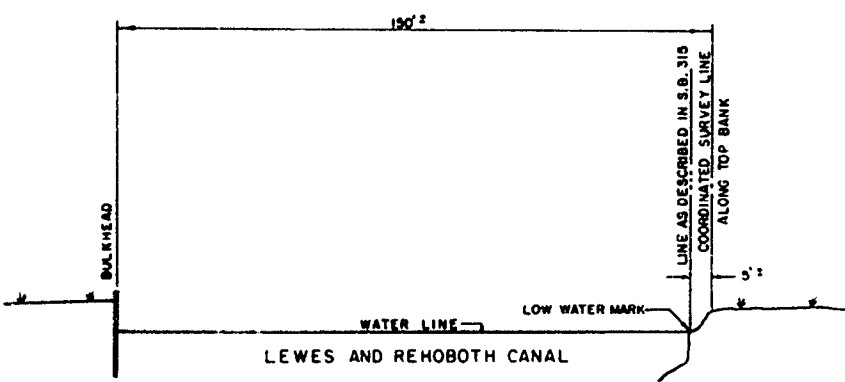
SECTION "A-A" (See sheet 2 of 5)
Scale: 1" = 20'



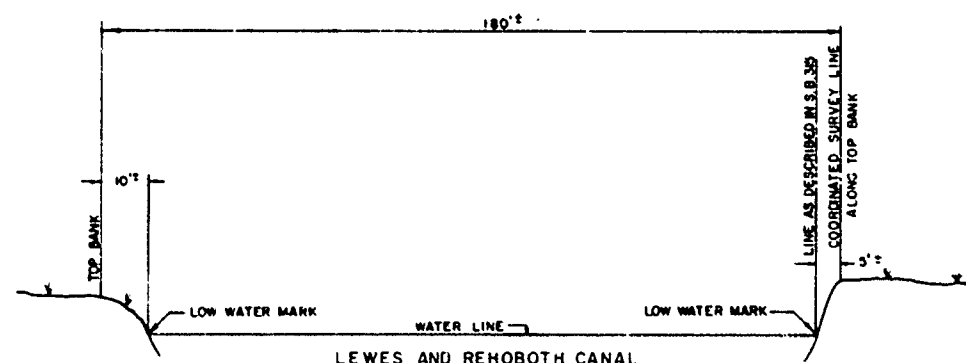
SECTION "B-B" (See sheet 2 of 5)
Scale: 1" = 20'



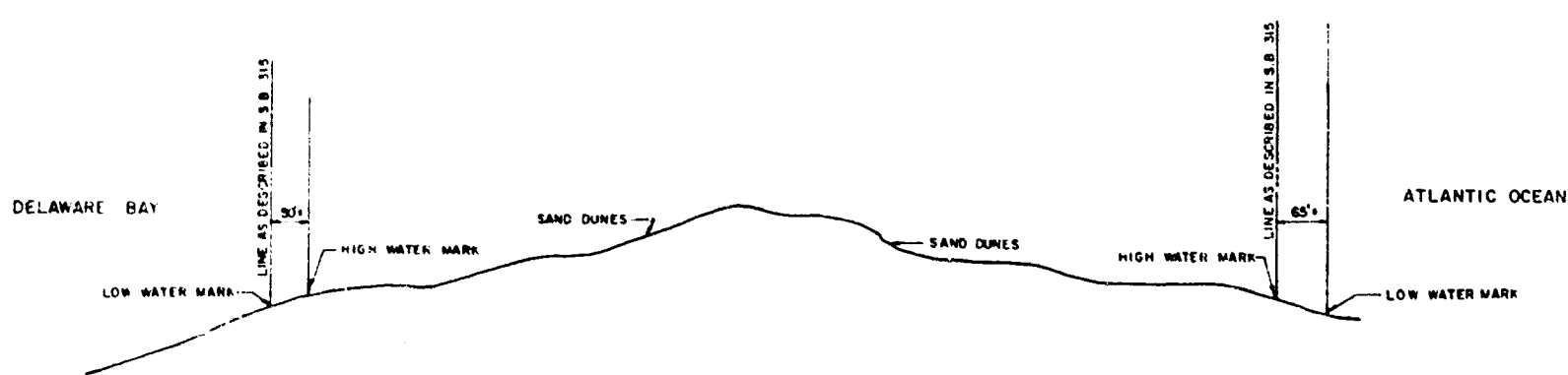
SECTION "C-C" (See sheet 2 of 5)
Scale: 1" = 20'



SECTION "D-D" (See sheet 2 of 5)
Not To Scale

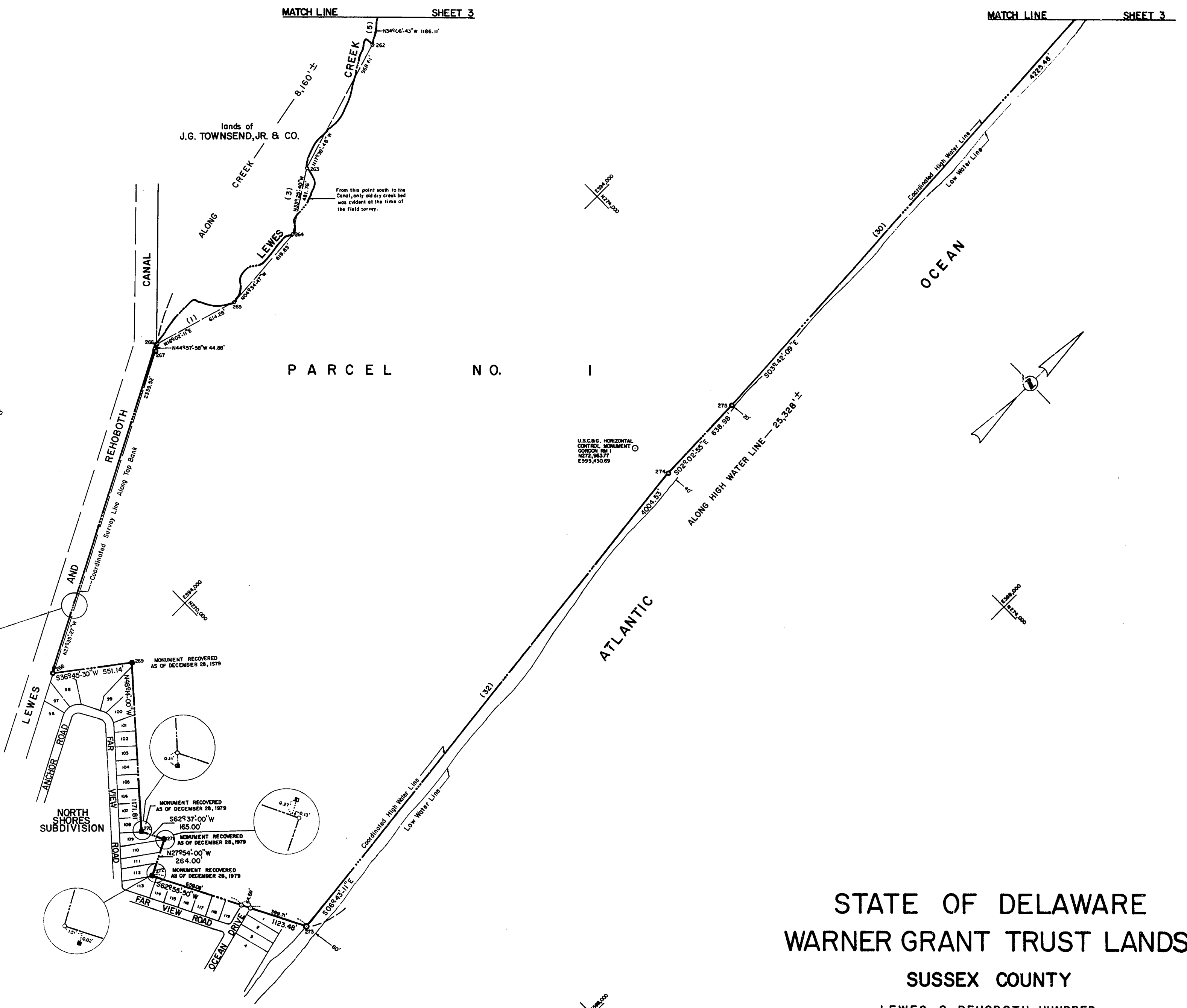


SECTION "E-E" (See sheet 2 of 5)
Not To Scale



SECTION "F-F" (See sheet 1 of 5)
Not To Scale

LEWES AND REHOBOTH CANAL
DETAIL
NOT TO SCALE



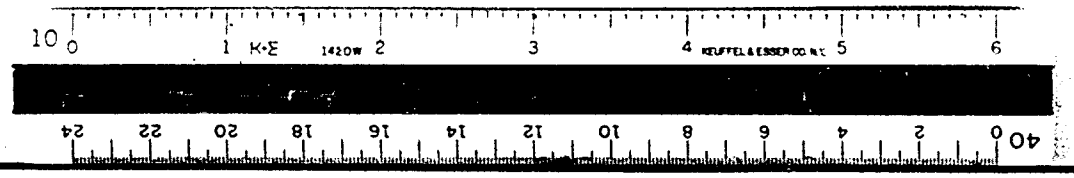
**STATE OF DELAWARE
WARNER GRANT TRUST LANDS
SUSSEX COUNTY
LEWES & REHOBOTH HUNDRED**

March 31, 1980
SCALE: 1" = 400'

Prepared by
MANN - TALLEY, INC.
818 WEST ST. WILMINGTON
288 N. REHOBOTH BLVD. MILFORD
DELAWARE

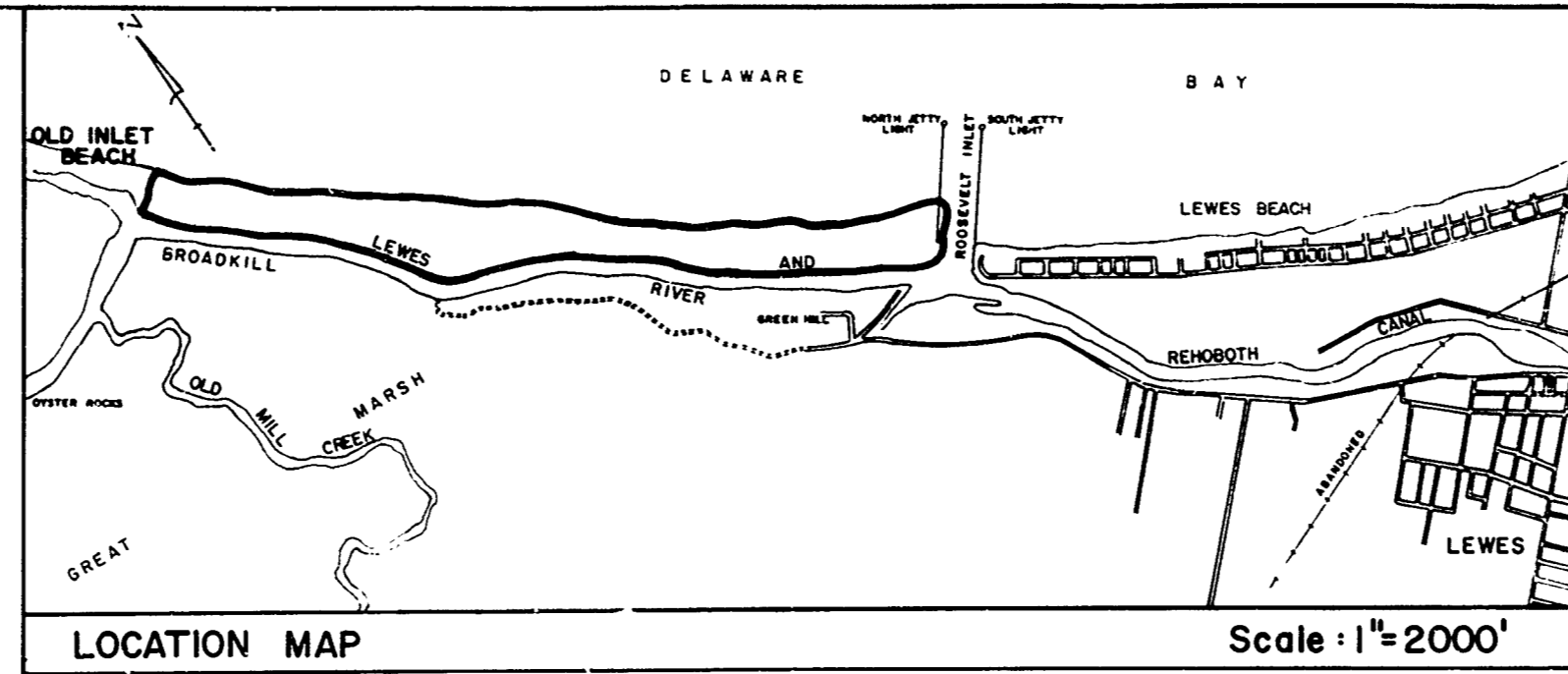
DWG. NO. 6590-L SHEET 4 of 5

RECEIVED FOR RECORD
Sept. 16, 1982 12:21 PM



THIS PLANNED AREA IS NOT WITHIN THE JURISDICTION OF THE COUNTY PLANNING AND ZONING COMMISSION. D.W.T. 9/16/82

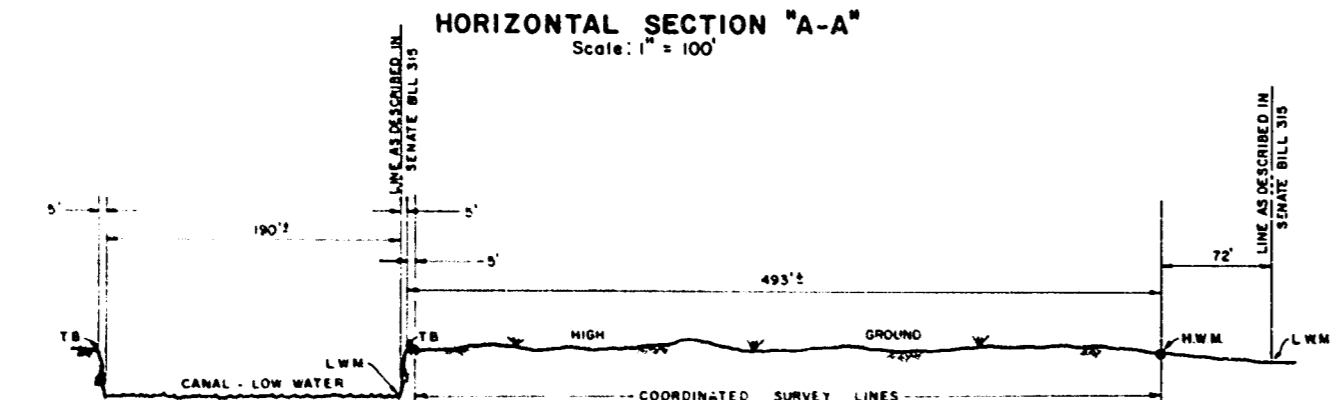
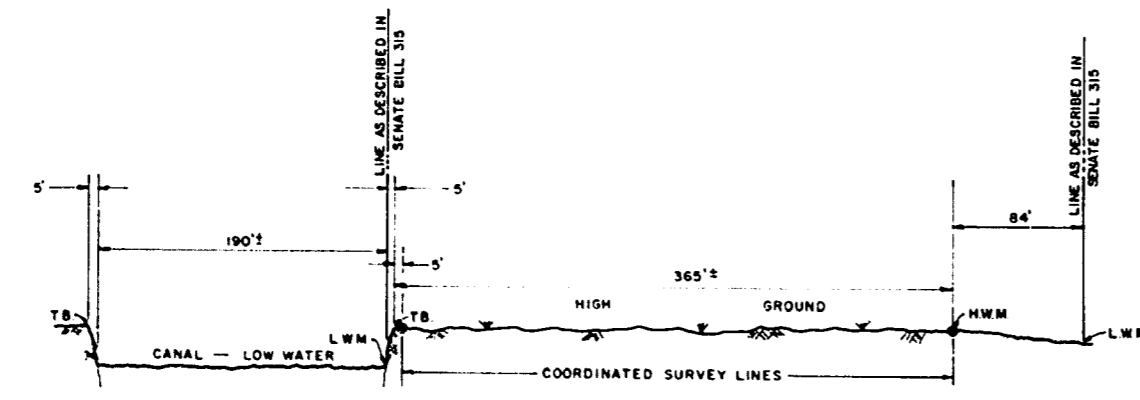
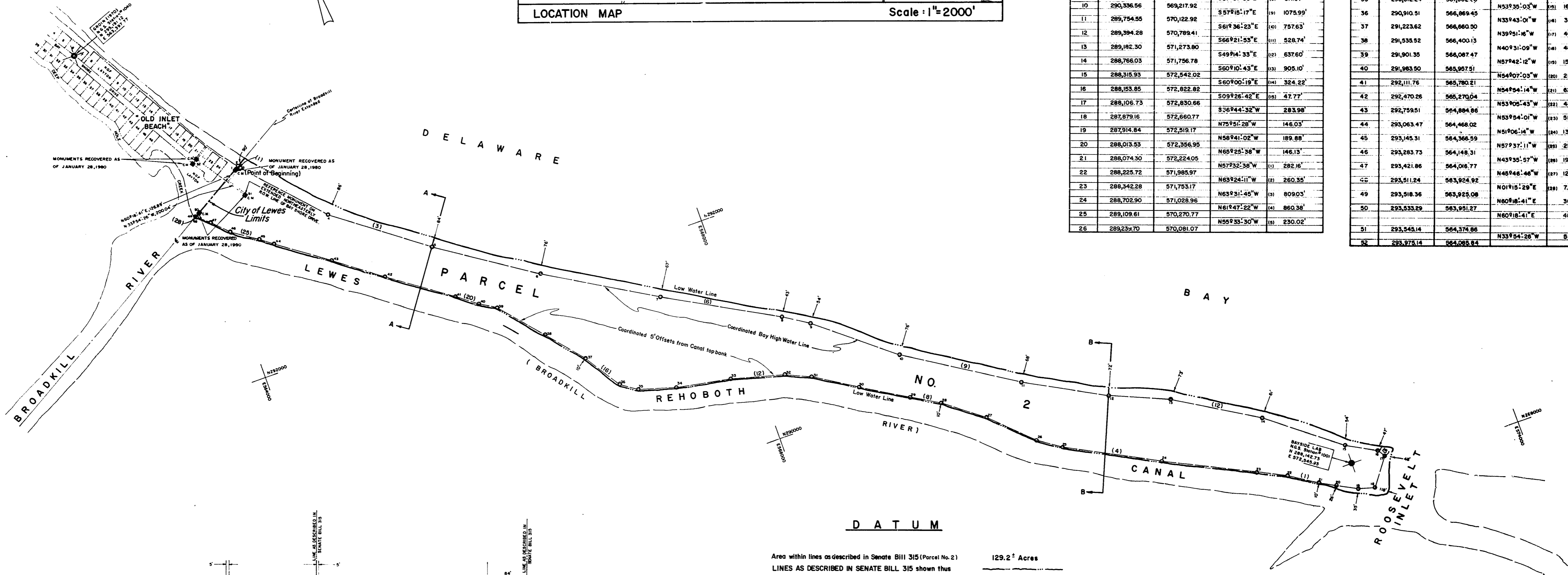
18.26 P. 322



COORDINATED SURVEY INFORMATION

| POINT | NORTHING | EASTING | BEARING | DISTANCE |
|-------|------------|------------|-------------|--------------|
| 1 | 293,774.01 | 564,373.50 | N60°18'41"E | 34.46' |
| 2 | 293,791.08 | 564,403.44 | S36°46'10"E | (1) 32.33' |
| 3 | 293,765.18 | 564,422.79 | S42°29'42"E | (1) 843.23' |
| 4 | 293,143.44 | 564,992.42 | S52°43'17"E | (3) 941.46' |
| 5 | 292,573.20 | 565,741.54 | S56°27'57"E | (4) 954.43' |
| 6 | 292,049.94 | 566,537.11 | S59°25'10"E | (5) 1063.24' |
| 7 | 291,505.05 | 567,452.50 | S61°01'56"E | (6) 1053.36' |
| 8 | 290,994.84 | 568,374.07 | S55°11'34"E | (7) 259.72' |
| 9 | 290,846.64 | 568,587.32 | S51°01'53"E | (8) 811.07' |
| 10 | 290,336.56 | 569,217.92 | S57°15'17"E | (9) 1075.99' |
| 11 | 289,754.55 | 570,122.92 | S61°36'23"E | (10) 757.63' |
| 12 | 289,394.28 | 570,789.41 | S66°21'55"E | (11) 528.74' |
| 13 | 289,162.30 | 571,273.80 | S49°14'33"E | (12) 637.60' |
| 14 | 288,766.03 | 571,756.78 | S60°10'43"E | (13) 905.10' |
| 15 | 288,318.93 | 572,242.02 | S60°00'19"E | (14) 324.22' |
| 16 | 288,153.65 | 572,822.82 | S09°26'42"E | (15) 47.77' |
| 17 | 288,106.73 | 572,830.66 | S36°44'32"W | 283.98' |
| 18 | 287,879.16 | 572,660.77 | N75°51'28"W | 146.03' |
| 19 | 287,914.64 | 572,519.17 | N58°41'02"W | 189.88' |
| 20 | 288,013.53 | 572,356.95 | N65°25'38"W | 146.13' |
| 21 | 288,074.30 | 572,224.05 | N57°32'38"W | (1) 282.16' |
| 22 | 288,225.72 | 571,985.97 | N63°24'11"W | (2) 260.35' |
| 23 | 288,342.28 | 571,753.17 | N63°31'45"W | (3) 809.03' |
| 24 | 288,702.90 | 571,028.96 | N61°47'22"W | (4) 860.38' |
| 25 | 289,109.61 | 570,270.77 | N55°33'30"W | (5) 230.02' |
| 26 | 289,234.70 | 570,081.07 | | |

| POINT | NORTHING | EASTING | BEARING | DISTANCE |
|-------|------------|------------|-------------|--------------|
| 27 | 289,378.74 | 569,733.36 | N45°43'26"W | (6) 486.80' |
| 28 | 289,828.57 | 569,414.10 | N51°57'22"W | (7) 405.39' |
| 29 | 289,960.21 | 569,173.62 | N61°18'10"W | (8) 274.15' |
| 30 | 290,190.28 | 568,789.96 | N59°02'58"W | (9) 447.36' |
| 31 | 290,413.91 | 568,439.78 | N57°26'16"W | (10) 415.50' |
| 32 | 290,509.38 | 568,228.02 | N65°43'56"W | (11) 232.29' |
| 33 | 290,637.72 | 567,776.37 | N74°06'14"W | (12) 469.52' |
| 34 | 290,720.00 | 567,314.80 | N79°53'32"W | (13) 488.85' |
| 35 | 290,812.24 | 567,002.68 | N73°32'12"W | (14) 325.48' |
| 36 | 290,910.51 | 566,869.45 | N53°35'03"W | (15) 165.53' |
| 37 | 291,223.62 | 566,860.50 | N33°43'04"W | (16) 376.44' |
| 38 | 291,538.52 | 566,400.13 | N39°51'16"W | (17) 406.29' |
| 39 | 291,901.35 | 566,087.47 | N40°31'09"W | (18) 481.23' |
| 40 | 291,983.50 | 565,907.51 | N57°42'12"W | (19) 153.74' |
| 41 | 292,111.76 | 565,760.21 | N54°07'03"W | (20) 218.83' |
| 42 | 292,470.26 | 565,270.04 | N54°54'14"W | (21) 623.54' |
| 43 | 292,758.51 | 564,864.86 | N53°06'43"W | (22) 481.89' |
| 44 | 293,063.47 | 564,468.02 | N53°54'01"W | (23) 515.89' |
| 45 | 293,145.31 | 564,368.59 | N51°06'14"W | (24) 130.33' |
| 46 | 293,283.73 | 564,148.31 | N57°37'11"W | (25) 258.47' |
| 47 | 293,421.86 | 564,016.77 | N43°35'57"W | (26) 190.74' |
| 48 | 293,511.24 | 563,924.92 | N48°46'46"W | (27) 128.16' |
| 49 | 293,518.36 | 563,925.08 | N01°15'29"E | (28) 7.12' |
| 50 | 293,833.29 | 563,931.27 | N60°18'41"E | 30.15' |
| 51 | 293,545.14 | 564,374.66 | N60°18'41"E | 486.03' |
| 52 | 293,975.14 | 564,065.84 | N33°54'28"W | 816.11' |

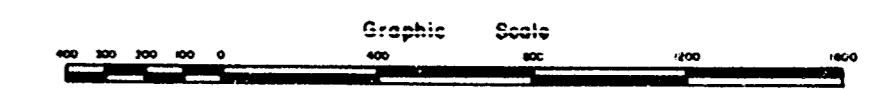


Area within lines as described in Senate Bill 315 (Parcel No. 2) 129.2² Acres
 LINES AS DESCRIBED IN SENATE BILL 315 shown thus
 COORDINATED SURVEY LINE shown thus
 LEGEND OF SYMBOLS: Concrete Monument (C.M. - ■) Survey Station (○) Witness Post (○)
 SYSTEM OF BEARINGS: Delaware Plane Coordinate System
 DESIGNATED COURSE NUMBERS shown thus (28)

NOTE: THE PERIMETER OF THE PARCEL OF LAND SHOWN HEREON IS IN ACCORDANCE WITH THE DIRECTIONS DICTATED BY THE 130th GENERAL ASSEMBLY OF THE STATE OF DELAWARE IN SENATE BILL No. 315, SENATE AMENDMENT No. 1, SECTION No. 2, DATED JULY 5, 1979. THE DISTANCES FROM THE COORDINATED DELAWARE BAY HIGH WATER LINE AND THE OFF-SET TOP BANK LINE OF THE LEWES-REHOBOTH CANAL ARE TO LOCATE SAID PERIMETER STATED THEREIN.

STATE OF DELAWARE
 WARNER GRANT TRUST LANDS
 SUSSEX COUNTY

LEWES & REHOBOTH HUNDRED
 March 31, 1980 SCALE: 1" = 400'



Prepared by
MANN - TALLEY, INC.
 818 WEST ST. WILMINGTON
 288 N. REHOBOTH BLVD. MILFORD
 DELAWARE

RECEIVED FOR RECORD
 Sept. 16, 1982
 9/16/82

36 P. 323

DWG. NO. 6590-L SHEET 5 of 5